

© 2017 HERE © AND © 2017 Microsoft Corporation ; © Harris Corp, Earthstar Geographics LLC Earthstar Geographics SIO © 2017 Microsoft Corporation

**NO<sub>2</sub>-concentratie**

- < 35 µg/m<sup>3</sup>
- 35 - 38.5 µg/m<sup>3</sup>
- 38.5 - 40.5 µg/m<sup>3</sup>
- 40.5 - 42.5 µg/m<sup>3</sup>
- > 42.5 µg/m<sup>3</sup>

- Gehanteerde wegen
- ▭ Studiegebied



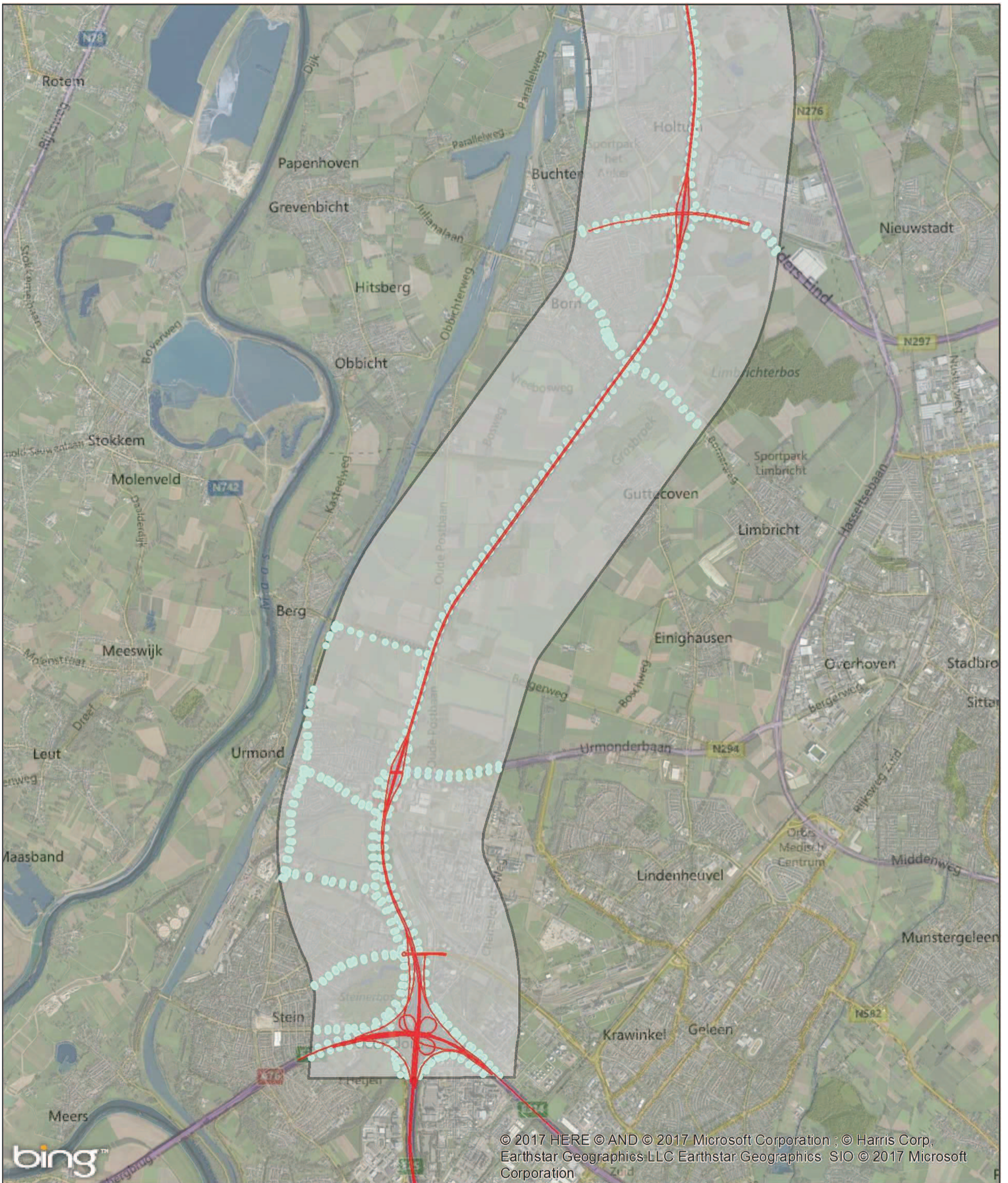
**A2 Het Vonderen – Kerensheide**  
Luchtkwaliteit

opdrachtgever: Rijkswaterstaat



datum: 2-3-2017 N C05056.000014  
 schaal (A4): 1:50\_000





© 2017 HERE © AND © 2017 Microsoft Corporation ; © Harris Corp, Earthstar Geographics LLC Earthstar Geographics SIO © 2017 Microsoft Corporation

**NO<sub>2</sub>-concentratie**

- < 35 µg/m<sup>3</sup>
- 35 - 38.5 µg/m<sup>3</sup>
- 38.5 - 40.5 µg/m<sup>3</sup>
- 40.5 - 42.5 µg/m<sup>3</sup>
- > 42.5 µg/m<sup>3</sup>

- Gehanteerde wegen
- Studiegebied

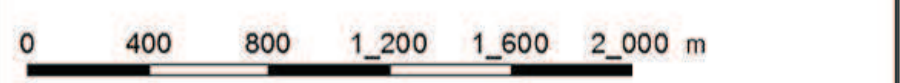


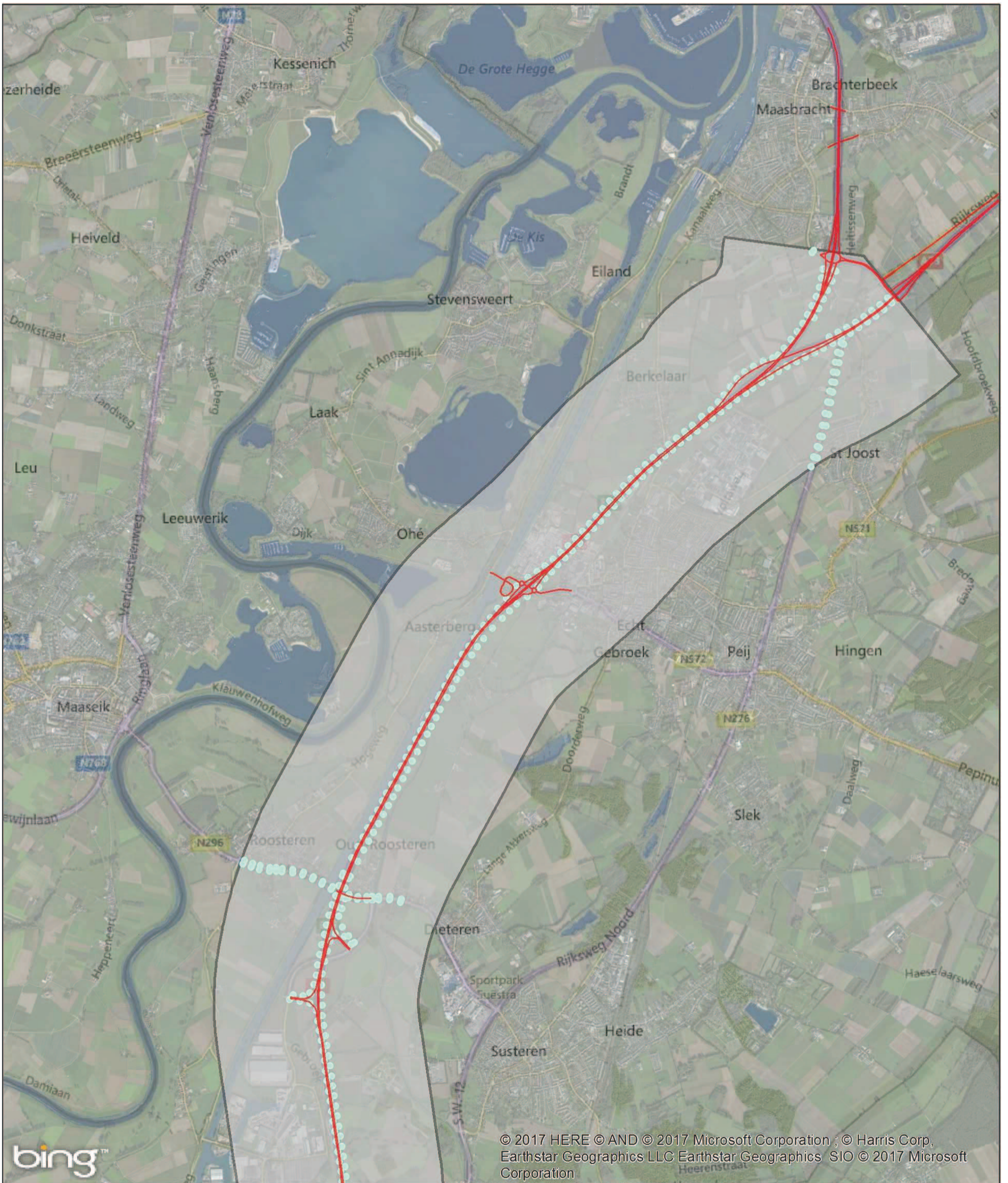
**A2 Het Vonderen  
– Kerensheide  
Luchtkwaliteit**

opdrachtgever: Rijkswaterstaat



datum: 2-3-2017 N C05056.000014  
 schaal (A4): 1:50\_000





© 2017 HERE © AND © 2017 Microsoft Corporation ; © Harris Corp, Earthstar Geographics LLC Earthstar Geographics SIO © 2017 Microsoft Corporation

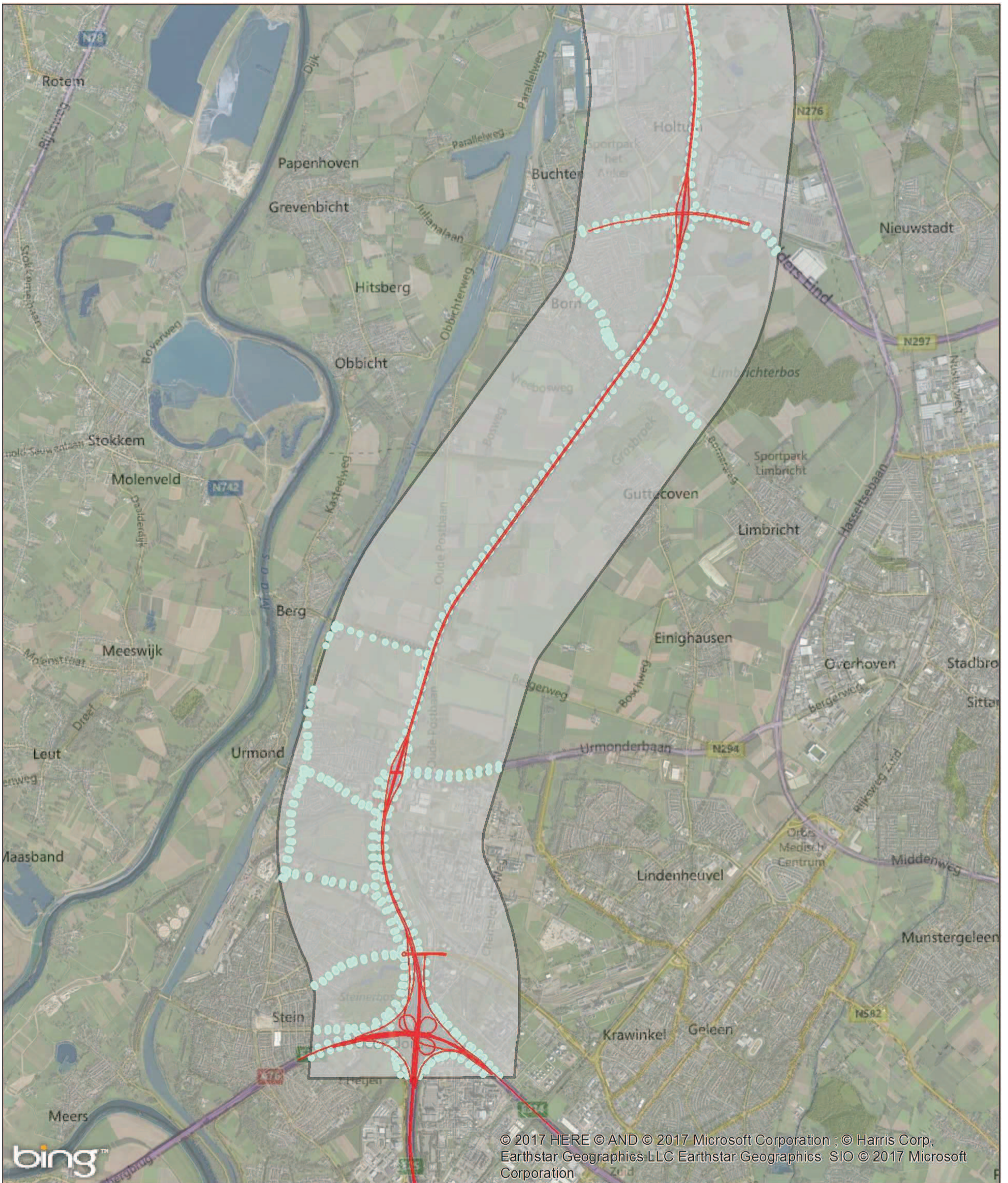
- PM<sub>10</sub>-concentratie**
- <math>< 35 \mu\text{g}/\text{m}^3</math>
  - <math>35 - 38.5 \mu\text{g}/\text{m}^3</math>
  - <math>38.5 - 40.5 \mu\text{g}/\text{m}^3</math>
  - <math>40.5 - 42.5 \mu\text{g}/\text{m}^3</math>
  - <math>> 42.5 \mu\text{g}/\text{m}^3</math>
- Gehanteerde wegen  
 ■ Studiegebied



**A2 Het Vonderen – Kerensheide**  
 Luchtkwaliteit

opdrachtgever: Rijkswaterstaat  
**ARCADIS** Design & Consultancy for natural and built assets

datum: 2-3-2017 N C05056.000014  
 schaal (A4): 1:50\_000  
 0 400 800 1\_200 1\_600 2\_000 m



© 2017 HERE © AND © 2017 Microsoft Corporation ; © Harris Corp, Earthstar Geographics LLC Earthstar Geographics SIO © 2017 Microsoft Corporation

**PM<sub>10</sub>-concentratie**

- <math>< 35 \mu\text{g}/\text{m}^3</math>
- <math>35 - 38.5 \mu\text{g}/\text{m}^3</math>
- <math>38.5 - 40.5 \mu\text{g}/\text{m}^3</math>
- <math>40.5 - 42.5 \mu\text{g}/\text{m}^3</math>
- <math>> 42.5 \mu\text{g}/\text{m}^3</math>

- Gehanteerde wegen
- ▭ Studiegebied



**A2 Het Vonderen  
– Kerensheide  
Luchtkwaliteit**

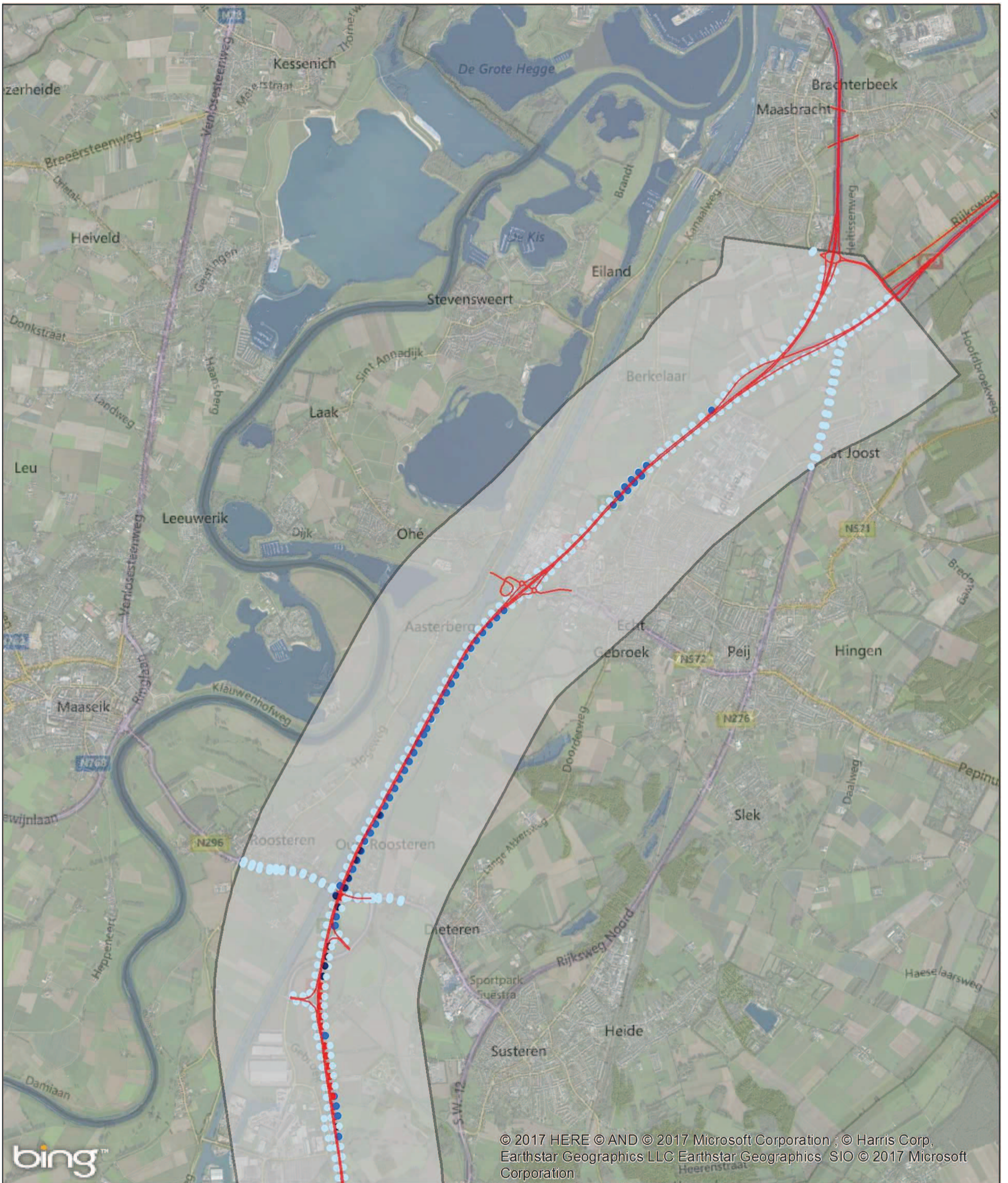
opdrachtgever: Rijkswaterstaat



datum: 2-3-2017 N C05056.000014

schaal (A4): 1:50\_000





© 2017 HERE © AND © 2017 Microsoft Corporation ; © Harris Corp, Earthstar Geographics LLC Earthstar Geographics SIO © 2017 Microsoft Corporation

**NO<sub>2</sub>-concentratie**

- < 35 ug/m<sup>3</sup>
- 35 - 38.5 µg/m<sup>3</sup>
- 38.5 - 40.5 µg/m<sup>3</sup>
- 40.5 - 42.5 µg/m<sup>3</sup>
- > 42.5 µg/m<sup>3</sup>

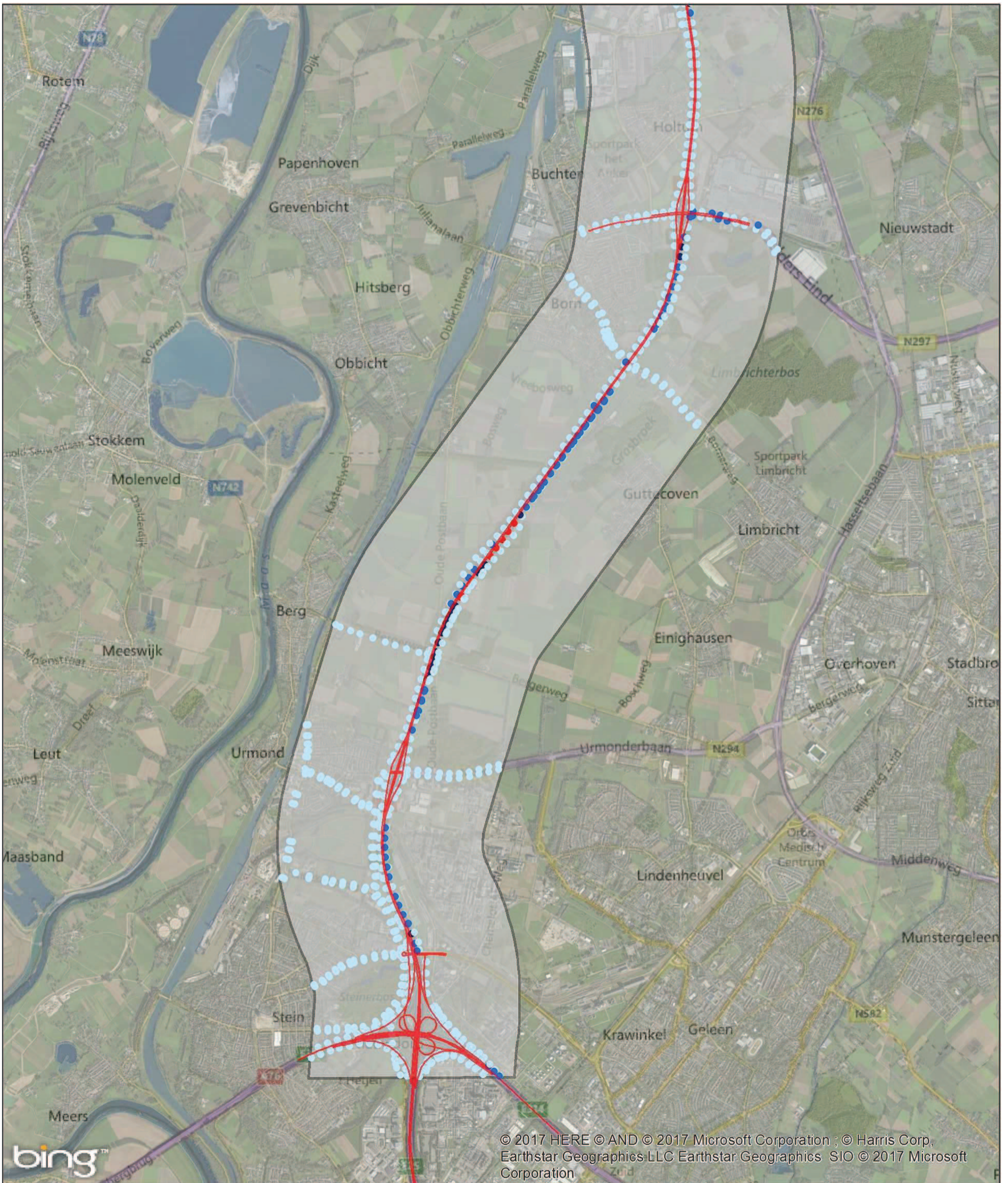
- Gehanteerde wegen
- Studiegebied



**A2 Het Vonderen – Kerensheide**  
Luchtkwaliteit

opdrachtgever: Rijkswaterstaat  
**ARCADIS** Design & Consultancy for natural and built assets

datum: 2-3-2017 N C05056.000014  
 schaal (A4): 1:50\_000



© 2017 HERE © AND © 2017 Microsoft Corporation ; © Harris Corp, Earthstar Geographics LLC Earthstar Geographics SIO © 2017 Microsoft Corporation

**NO<sub>2</sub>-concentratie**

- < 35 ug/m<sup>3</sup>
- 35 - 38.5 µg/m<sup>3</sup>
- 38.5 - 40.5 µg/m<sup>3</sup>
- 40.5 - 42.5 µg/m<sup>3</sup>
- > 42.5 µg/m<sup>3</sup>

- Gehanteerde wegen
- ▭ Studiegebied



**A2 Het Vonderen  
– Kerensheide  
Luchtkwaliteit**

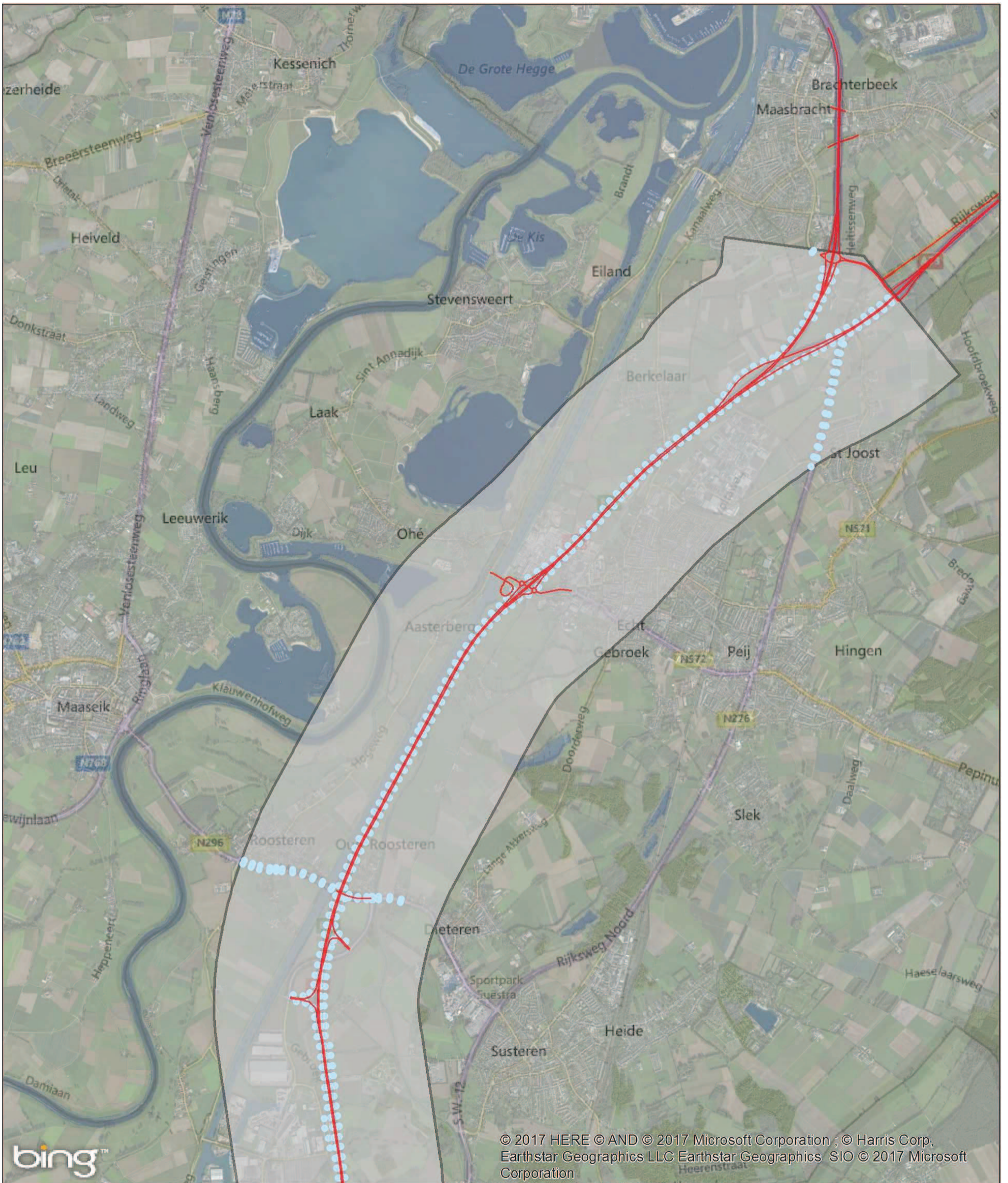
opdrachtgever: Rijkswaterstaat



datum: 2-3-2017 N C05056.000014

schaal (A4): 1:50\_000

0 400 800 1\_200 1\_600 2\_000 m



© 2017 HERE © AND © 2017 Microsoft Corporation ; © Harris Corp, Earthstar Geographics LLC Earthstar Geographics SIO © 2017 Microsoft Corporation

**PM<sub>10</sub>-concentratie**


- <math>< 35 \mu\text{g}/\text{m}^3</math>
- <math>35 - 38.5 \mu\text{g}/\text{m}^3</math>
- <math>38.5 - 40.5 \mu\text{g}/\text{m}^3</math>
- <math>40.5 - 42.5 \mu\text{g}/\text{m}^3</math>
- <math>> 42.5 \mu\text{g}/\text{m}^3</math>

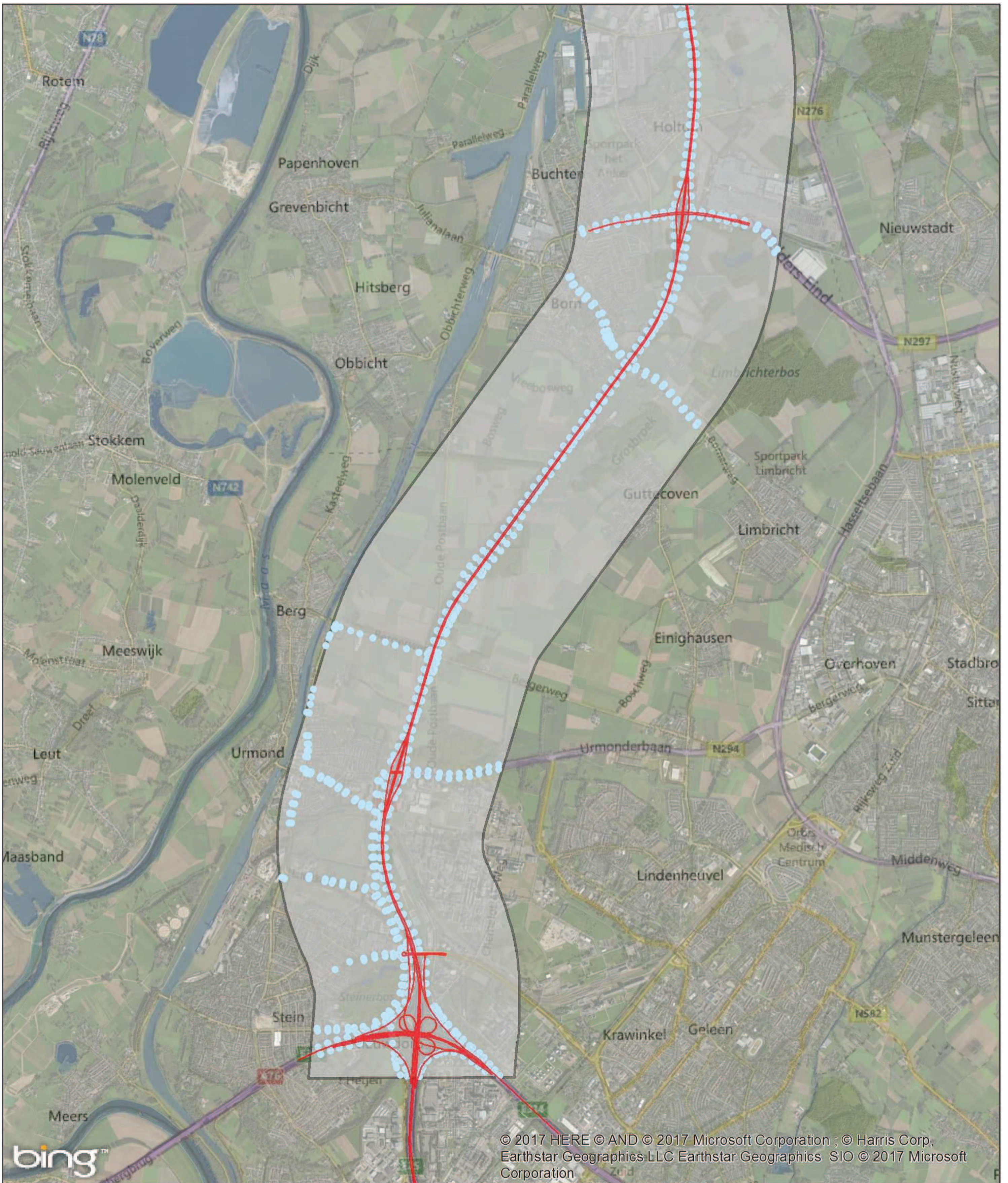
- Gehanteerde wegen
- Studiegebied



**A2 Het Vonderen – Kerensheide**  
Luchtkwaliteit

opdrachtgever: Rijkswaterstaat  
 **ARCADIS** Design & Consultancy for natural and built assets

datum: 2-3-2017 N C05056.000014  
 schaal (A4): 1:50\_000  




© 2017 HERE © AND © 2017 Microsoft Corporation ; © Harris Corp, Earthstar Geographics LLC Earthstar Geographics SIO © 2017 Microsoft Corporation

**PM<sub>10</sub>-concentratie**

- < 35 µg/m<sup>3</sup>
- 35 - 38.5 µg/m<sup>3</sup>
- 38.5 - 40.5 µg/m<sup>3</sup>
- 40.5 - 42.5 µg/m<sup>3</sup>
- > 42.5 µg/m<sup>3</sup>

- Gehanteerde wegen
- ▭ Studiegebied



**A2 Het Vonderen  
– Kerensheide  
Luchtkwaliteit**

opdrachtgever: Rijkswaterstaat



datum: 2-3-2017 N C05056.000014

schaal (A4): 1:50\_000

0 400 800 1\_200 1\_600 2\_000 m