



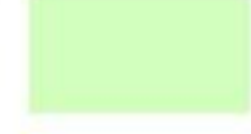













Legenda

Zichtjaar 2024

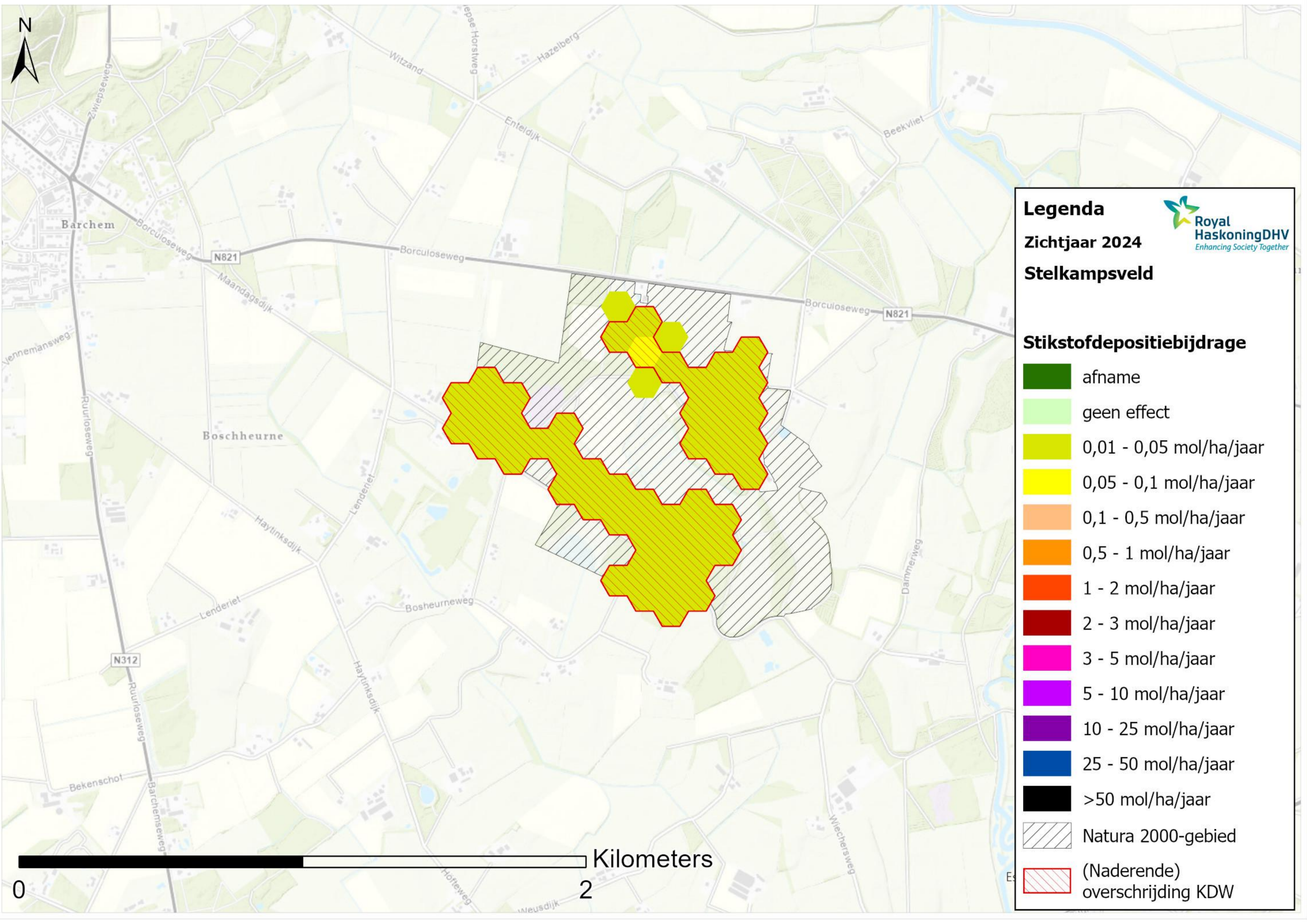
Kornburgerveen



Stikstofdepositiebijdrage

	afname
	geen effect
	0,01 - 0,05 mol/ha/jaar
	0,05 - 0,1 mol/ha/jaar
	0,1 - 0,5 mol/ha/jaar
	0,5 - 1 mol/ha/jaar
	1 - 2 mol/ha/jaar
	2 - 3 mol/ha/jaar
	3 - 5 mol/ha/jaar
	5 - 10 mol/ha/jaar
	10 - 25 mol/ha/jaar
	25 - 50 mol/ha/jaar
	>50 mol/ha/jaar
	Natura 2000-gebied
	(Naderende) overschrijding KDW

0  2 Kilometers



Legenda

Zichtjaar 2024

Stelkampsveld

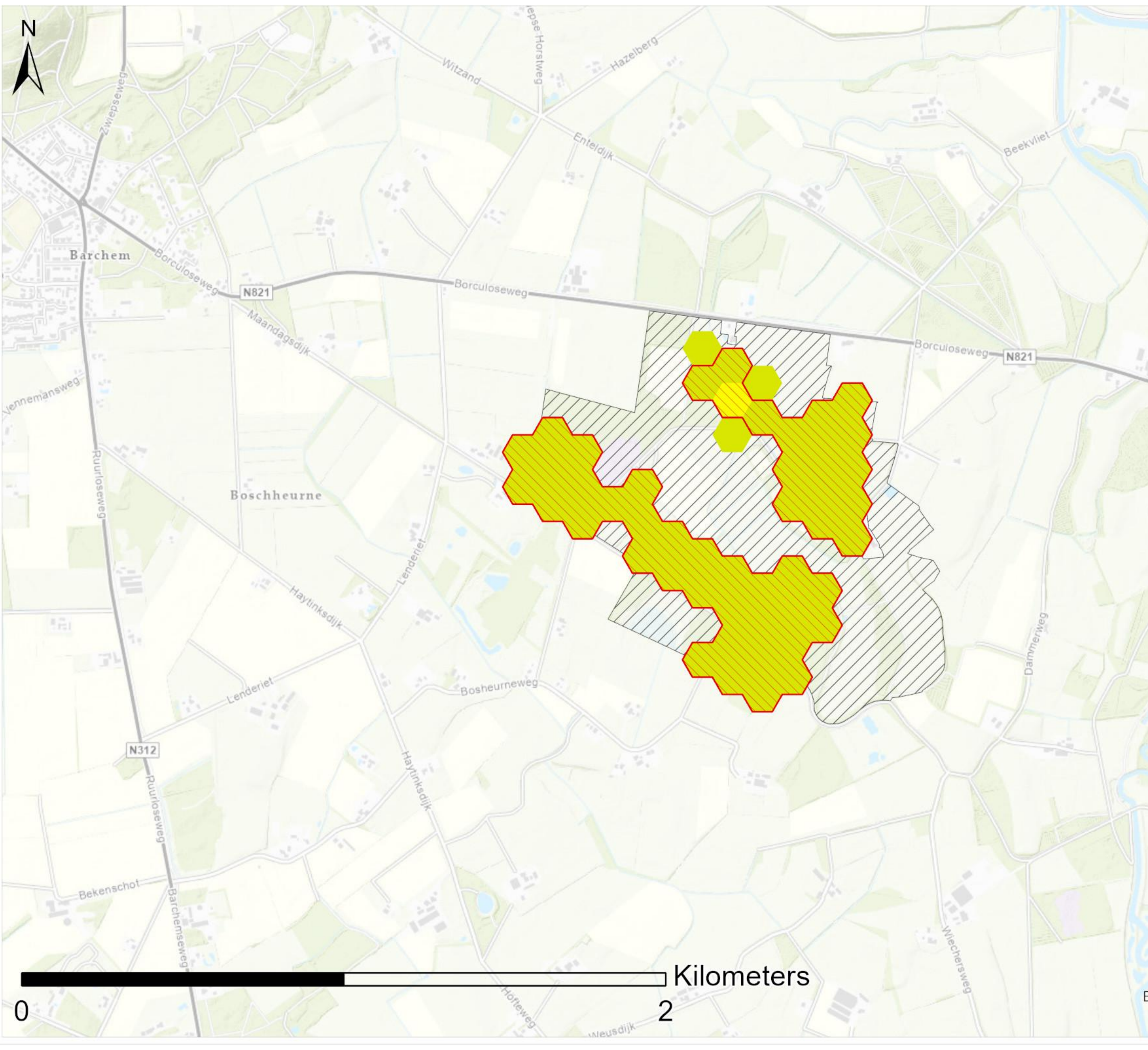
Stikstofdepositiebijdrage

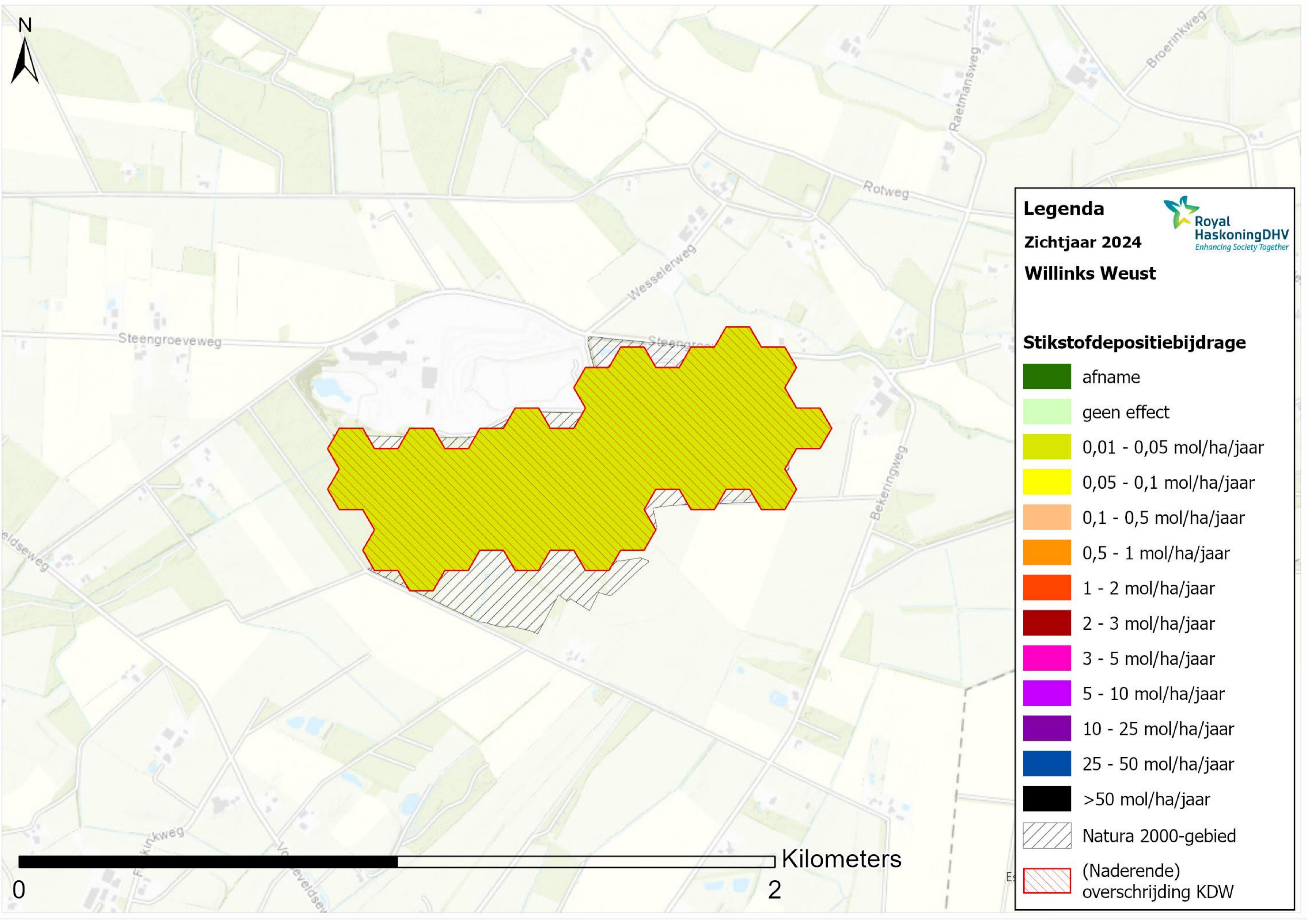
- afname
- geen effect
- 0,01 - 0,05 mol/ha/jaar
- 0,05 - 0,1 mol/ha/jaar
- 0,1 - 0,5 mol/ha/jaar
- 0,5 - 1 mol/ha/jaar
- 1 - 2 mol/ha/jaar
- 2 - 3 mol/ha/jaar
- 3 - 5 mol/ha/jaar
- 5 - 10 mol/ha/jaar
- 10 - 25 mol/ha/jaar
- 25 - 50 mol/ha/jaar
- >50 mol/ha/jaar
- Natura 2000-gebied
- (Naderende) overschrijding KDW

Kilometers

0

2





Legenda

Zichtjaar 2024

Willinks Weust

Stikstofdepositiebijdrage

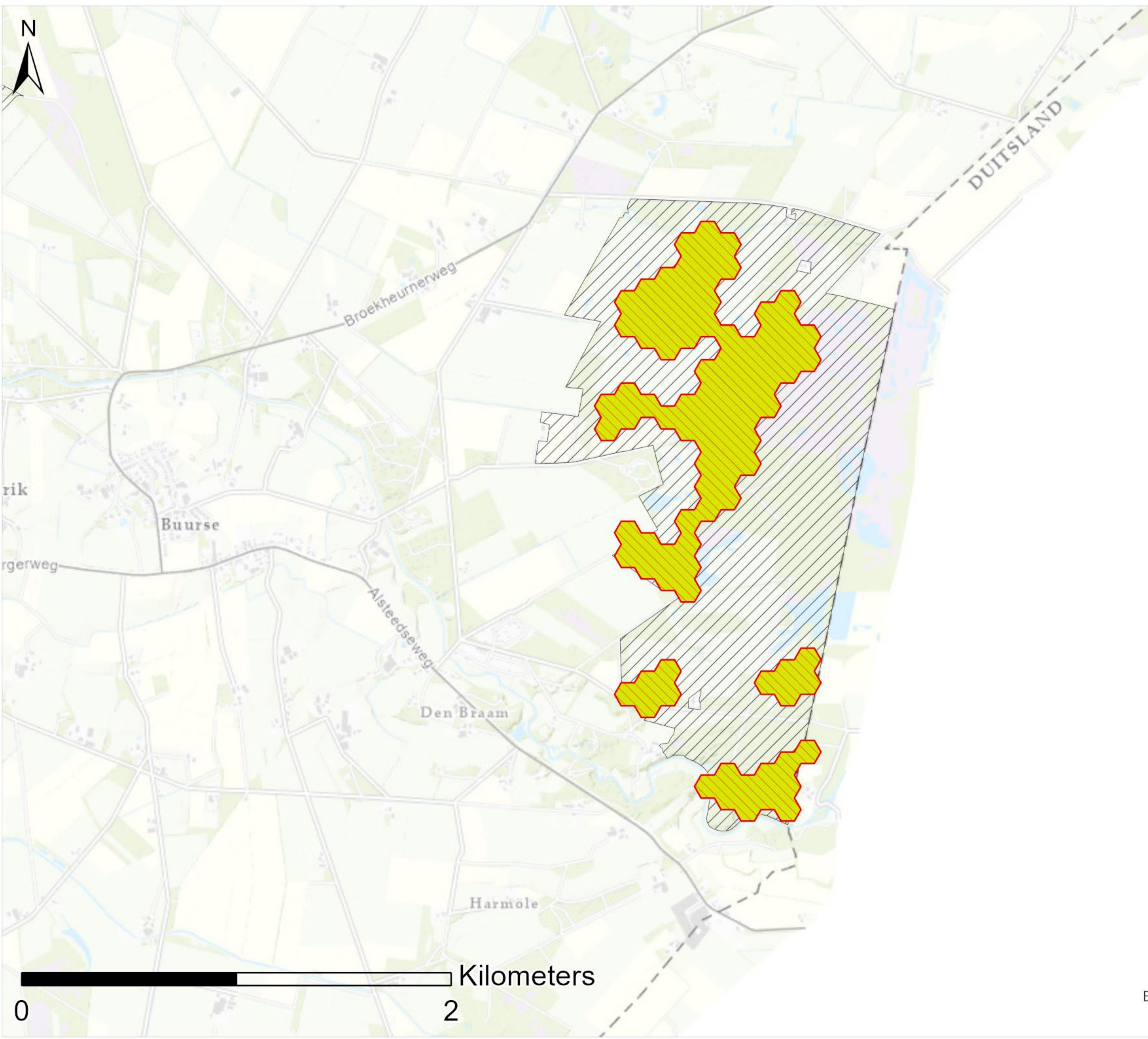
- afname
- geen effect
- 0,01 - 0,05 mol/ha/jaar
- 0,05 - 0,1 mol/ha/jaar
- 0,1 - 0,5 mol/ha/jaar
- 0,5 - 1 mol/ha/jaar
- 1 - 2 mol/ha/jaar
- 2 - 3 mol/ha/jaar
- 3 - 5 mol/ha/jaar
- 5 - 10 mol/ha/jaar
- 10 - 25 mol/ha/jaar
- 25 - 50 mol/ha/jaar
- >50 mol/ha/jaar
- Natura 2000-gebied
- (Naderende) overschrijding KDW

Royal HaskoningDHV
Enhancing Society Together

0

2

Kilometers



Legenda

Zichtjaar 2024

Witte Veen

Stikstofdepositiebijdrage

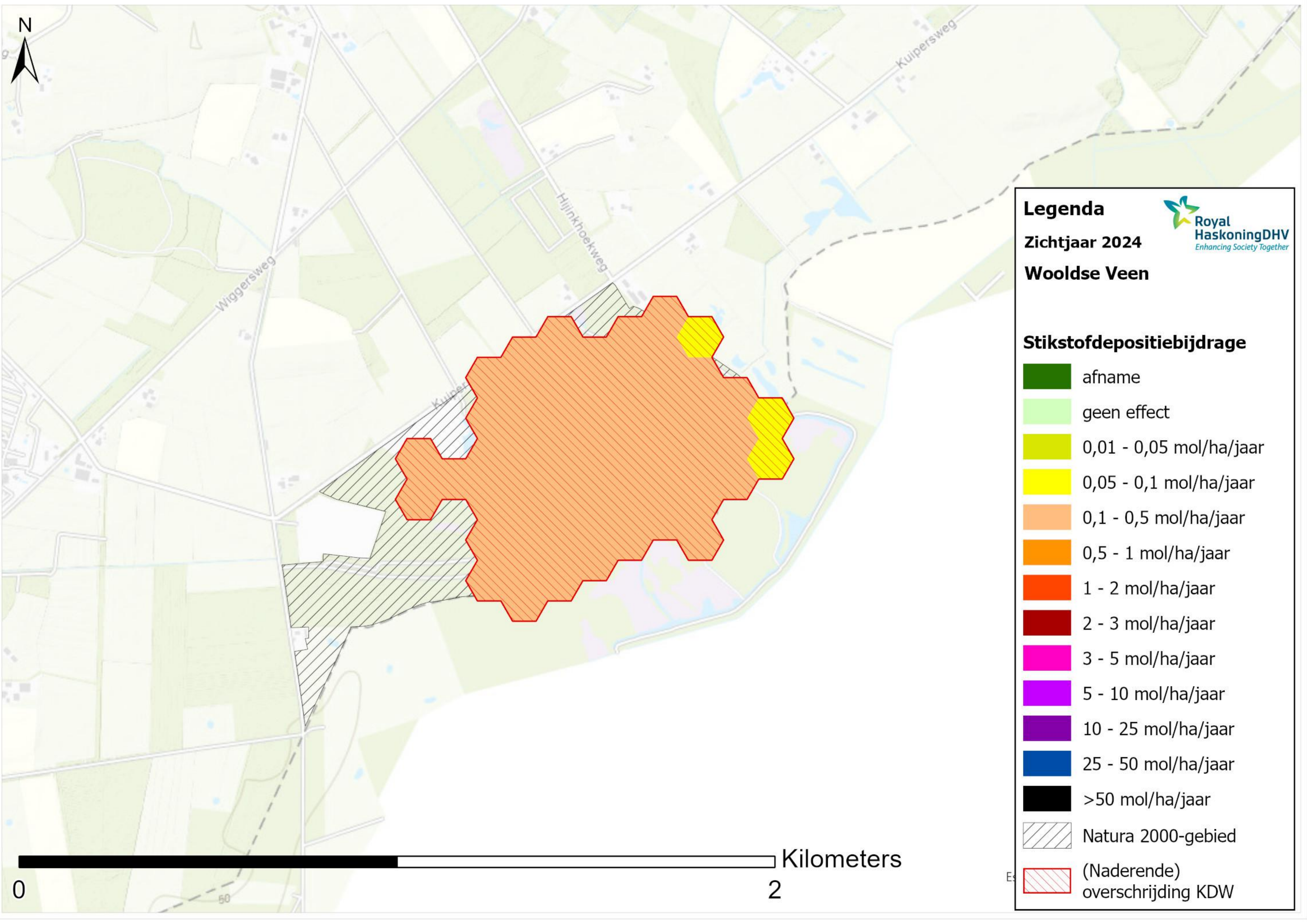
	afname
	geen effect
	0,01 - 0,05 mol/ha/jaar
	0,05 - 0,1 mol/ha/jaar
	0,1 - 0,5 mol/ha/jaar
	0,5 - 1 mol/ha/jaar
	1 - 2 mol/ha/jaar
	2 - 3 mol/ha/jaar
	3 - 5 mol/ha/jaar
	5 - 10 mol/ha/jaar
	10 - 25 mol/ha/jaar
	25 - 50 mol/ha/jaar
	>50 mol/ha/jaar
	Natura 2000-gebied
	(Naderende) overschrijding KDW



0

2


Kilometers



Legenda
Zichtjaar 2024
Wooldse Veen

Stikstofdepositiebijdrage

-  afname
-  geen effect
-  0,01 - 0,05 mol/ha/jaar
-  0,05 - 0,1 mol/ha/jaar
-  0,1 - 0,5 mol/ha/jaar
-  0,5 - 1 mol/ha/jaar
-  1 - 2 mol/ha/jaar
-  2 - 3 mol/ha/jaar
-  3 - 5 mol/ha/jaar
-  5 - 10 mol/ha/jaar
-  10 - 25 mol/ha/jaar
-  25 - 50 mol/ha/jaar
-  >50 mol/ha/jaar
-  Natura 2000-gebied
-  (Naderende) overschrijding KDW

0  2 Kilometers